



Ethernet interface for existing chambers

Web Controller Kit

Universal Web Controller Kit

- Remote chamber control, monitoring, and data logging via Ethernet and a web browser
- Installs on existing chambers with SCP-220, P-300, or Watlow F4T

Chamber Controller

192.168.0.83

ESPEC Chamber Controller

P300 Web Controller

Chamber Monitor | Constant Mode Setup | Program | Run/Stop | Setup

Main Page

Monitor
Check and monitor current chamber operation.

TEMP. HUM.

Constant Setup
Set your chamber to run a single condition. °C

Program Setup
Create a program for your chamber. °C

System Setup
Set chamber configuration and software.

Run/Stop Operation
This is where you go to turn the chamber on and off, as well as start programs.

Current Status:
STANDBY
Program: NONE
Current Step: NONE

Friday, Oct 10 2014 14:17

- Product Temperature: OFF
Product Setpoint: OFF
- Air Temperature: 32.7°C
Air Setpoint: 0°C
- Humidity: 61%
Humidity Setpoint: 85%
- Alarm Status: 0 alarms
- Chamber Keylock: OFF
- Time Signals (none)
- Refrigeration Control: 0%
- TCP Users (None)

ESPEC NORTH AMERICA, INC.
4141 Central Parkway
Hudsonville, MI 49426
Phone: 616-896-6100
FAX: 616-896-6150

©2009 ESPEC NORTH AMERICA
A Division of ESPEC Corp, Japan

Web Controller support page
www.espec.com

Product details

- Self-install Web Controller kit with cables
- Computer-on-a-board with custom server software
- Universal operation with SCP-220, P-300, or F4T controllers
- RS-232 "serial" interface required (use existing or purchase with the kit)
- Includes instructions for installation by the user

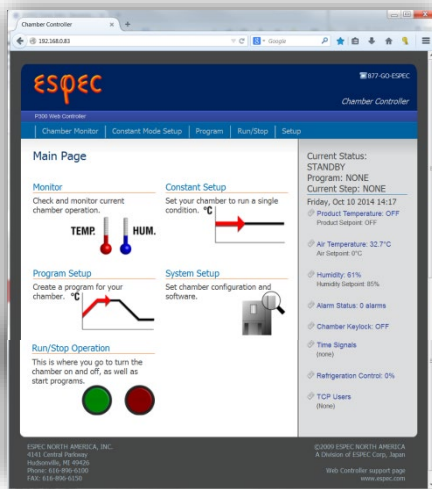


Online Demonstration

- Live demonstration:
 - www.espec.com/demo.htm
- Use login to see most features
 - Login: "demo"; password: "demo"
 - *For "Admin" role, see [Setup screenshots](#) (pdf)*

Setup Visualization

Computer



Network



Web Controller



Chamber with RS-232

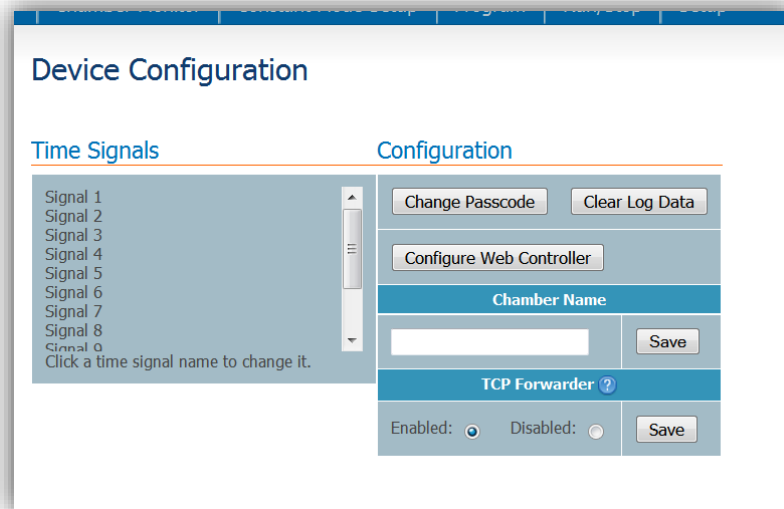


Improvements

- API functionality for remote access from other applications
- The new hardware noticeably faster – pages load about 33% quicker.
- Universal operation with SCP-220 or P-300 controllers. Now same interface for Watlow F4T as used on ESPEC Criterion benchtop chambers.
- The maximum data logging has been increased to one million points.
At the default sample rate this is improved from 9 days to over 11 months.
- TCP forwarder allows direct access for user-generated software (see next page).
- Improved options for setup, updating, and/or fixing software:
 - A keyboard and monitor can be used for setup to edit the IP address.
 - The factory firmware version can be restored by holding the 'H' key on a USB keyboard during boot.
 - A fresh firmware card can be prepared and installed by the user by simply extracting a zip file onto an SD card.
 - Defaults to use DHCP dynamic IP address.

Direct Ethernet interface

- TCP Forwarder enables control and monitor commands to be sent directly to the controller thru the Web Controller, bypassing the browser interface
- Functions as an RS-232-to-Ethernet converter.
- See communications manual for commands and protocol.
- User is responsible for their own software code.



The screenshot displays the 'Device Configuration' web interface. It is divided into two main sections: 'Time Signals' and 'Configuration'.

Time Signals: A list of signals from Signal 1 to Signal 8, with Signal 0 at the bottom. Below the list is the instruction: 'Click a time signal name to change it.'

Configuration: This section contains several controls:

- Buttons for 'Change Passcode' and 'Clear Log Data'.
- A 'Configure Web Controller' button.
- A 'Chamber Name' section with a text input field and a 'Save' button.
- A 'TCP Forwarder' section with a help icon (?), radio buttons for 'Enabled' (selected) and 'Disabled', and a 'Save' button.

Kit Includes

- Kit includes all items, except yellow Ethernet cable to your network



Externally mounted device

- Stand-alone unit needs separate 115V power
- Installs outside the chamber
- Cable included to connect to RS-232 port
- Screw mounts on case can be used to attach to chamber.



FAQs

- Upgrades for older Web Controllers? No, please buy a new WC-Kit
 - The firmware is designed for the new hardware
- USB port only useful for a keyboard
- RS-232 installation will be a bit harder for new “Platinous H” models due to longer cable-run to the option panel
- For wifi operation, purchase a separate Ethernet-to-wifi adapter and place away from the chamber.

Ordering details

- U-WEB-KIT: \$980
 - Universal Web Controller with RS-232 cable and power supply
- U-WEB-KIT-EP2: \$1,120
 - Includes RS-232 kit for Platinous with P-300
- U-WEB-KIT-EF: \$1,120
 - Includes RS-232 kit for Criterion with Watlow F4T
- U-WEB-KIT-P2: \$1,120
 - Includes RS-232 kit for other models with P-300
- U-WEB-KIT-S2: \$1,120
 - Includes RS-232 kit for any model with SCP-220

Orders should be placed with ESPEC Customer Support department at 877-463-7732 or support@espec.com

